

OEM Cross References

Updated Racor Interchangeable Element Listing

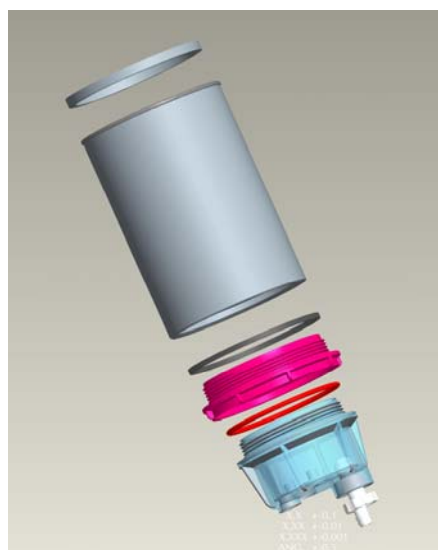
The Racor Filter Division Europe is pleased to inform you that the OEM interchangeable element listing has now been updated.

The complete excel file will be distributed with this N2U.

The newest OEM interchange is the R90P-D-MAX-KIT which fits the Renault 7420998349 Filter.

Parker Filtration Divisions (globally) provide a comprehensive range of filtration solutions for your application. These include; hydraulic filtration, condition monitoring systems, engine fuel, oil, air and coolant filtration.

Please contact your local Parker Sales Office if you require additional and specific information relating to this bulletin or any of the Parker Filtration Products.



Racor R90P-D- MAX-KIT with adaptor.

Contact Information:

Parker Hannifin (UK) Ltd
Racor Filter Division Europe
Tel: +44 (0) 1924 487000
Fax: + 44 (0) 1924 487001
Email: filtrationinfo@parker.com

Ref: FDRN081UK 07/08



Place your Racor Order Today



ENGINEERING YOUR SUCCESS.

OEM	Internal No.	Customer Part No.	Racor Functional Alternative
Agko		F339.202.060.120	R90T-D-MAX
Askam		37790T	R120T
Atlas Copco		4006527	R90P
Atlas Copco		1092035892	R90P
Atlas Copco		1092035897	R90P
Atlas Copco	R90-AC-01	2914807000	R90P
Atlas Copco	R90-AC-02	2914807100	R90T
Atlas Copco		2914808600	2020PM-OR
Atlas Copco		2914809200	R45P
Atlas Copco		2914809300	2040PM-OR
Atlas Copco		2914811100	R120P
Atlas Copco	120T-D-AC	2914823600	R120T
Atlas Copco		2914830700	2040PM-OR
Atlas Copco		AC2914.8092.00	R45P
Automotive Ind.		43113516-9	R11T
Baldwin		BF1281	R120P
Baldwin		BF1265	R120T
Baldwin *	The Baldwin part is to replace Racor original, but has a closed bottom can without bowl. Original bowl is required to use Racor	BF1223/BF1223SP	R60P
Baldwin *		BF1329SP	R90P
Baldwin *		BF1349SP	R90T
Baldwin		PF598-30	2010PM-OR
Baldwin		PF598-10	2010TM-OR
Baldwin		PF598	2010SM-OR
Baldwin		PF7890-30	2020PM-OR
Baldwin		PF7890-10	2020TM-OR
Baldwin		PF7890	2020SM-OR
Baldwin		PF7889-30	2040PM-OR
Baldwin		PF7889-10	2040TM-OR
Baldwin		PF7889	2040SM-OR
Bomag	R120T-D-BMG	05825009	R160T
Bomag	R120T-D-BMG	05825010	R160T
Bomag		05825015	R160T-D-MAX
BUSTER BOATS		552960	S3232
CAT		1335673	R120T
CAT		1290372	R120P
CAT		1290373	R120T
CAT		4P7384	2020SM-OR
CAT		407384	2020SM-OR
CAT		1110716	2020TM-OR
CAT		1346307	2020PM-OR
CAT		311484	R26S
CAT		1335671	R120T
Chrysler		05019741AA	PFF5607
Chrysler	30989-02	05080825AA	PFF5608
Chrysler		R22088	R20T
Chrysler		R22440	R52T
Chrysler		R58060	PFF5607
Claas		0068 711.0	R90P
CNH		20863193	R60T-D-MAX
CNH		84446332	R60T
CNH		84989840	R60P
CNH		87802519	CCV55304-08
CNH		87802929	R60T
CNH		87803210	R60T

OEM	Internal No.	Customer Part No.	Racor Functional Alternative
CNH		87802519	CCV55304-08
CNHTC		20863193	R60T-D-MAX
Daewoo		65.12501.5021	R160T
DAF	R120-DAF	1355891	PFF5605
DAF		1296851	R90P
DAF		1433649	B160T
DENNIS EAGLE		DEP102125	R60T-D-MAX
Chrysler		04723905	R20T
Chrysler		04798166	R52T
Daimler	R26-A50	3820927005 KZ	R26T
Daimler	R90-MER-01	A 000 477 13 02	R90-D-RCR-01
Daimler	R90-MER-01	A 000 477 13 02	R160T
Daimler	R90-D-MER-03	A 000 477 17 02	R160P
Daimler		A 382 092 70 05	R26T
Daimler	R90-D-MER-02	A0004771602	R90T-D-MAX
Daimler		A0004778715	R12P
Daimler		A0004779415	R26T
Daimler		A3754770002	R90P
Daimler		A4614770015	PFF5607
Daimler		B919628254401	R90T
Daimler		B919628254401	R90T
Daimler	R90-D-MER-02	HNM906092R112	R160P
Daimler		HNM906092R112	R160P
Deutz		01292404	R160T
Deutz		02113151	R160T
Deutz		02113151	R160T
Deutz		03119822	PFF5601
Deutz		04286843	R45P
Deutz		04291642	R90T-D-MAX
Deutz		02113151 EZ 0130-20	R160P
Deutz		02113151EZ013	R160P
Deutz	R120-D-DTZ	02113151EZ0130-20	R160T
Deutz		1227 8964	CCV55268
Deutz		1227 8964	CCV55268
Deutz		1230 0977	CCV55222-08
Deutz		1230 0977	CCV55222-08
Deutz		1230 1036	CCV55218
Deutz		1231 6173	CCV55275
Deutz		1231 6332	CCV55280
Deutz		1231 6332	CCV55280
Deutz		1231 6334	CCV55250
Deutz		1231 6334	CCV55250
Deutz		1231 6826	CCV55279
Deutz		1231 6826	CCV55279
Deutz		1231 6841	CCV55248-08
Deutz		1231 6843	CCV55274-08
Deutz		1231 6843	CCV55274-08
Deutz		HK7120WK30	R160P
Europart		9020000090	R90P
Europart		9020009000	R90T-D-MAX
Europart		9020200000	R20P
Europart		9020000120	R160T
EVOBUS		A0004771302	R160T
EVOBUS		A3754770002	R90P
FENDT		F339.202.060.120	R90T-D-MAX
FG Wilson		520-755	CCV55250

OEM	Internal No.	Customer Part No.	Racor Functional Alternative
FG Wilson		921-088	2020PM-OR
FG Wilson		974-897	2010PM-OR
Fleetguard		FF5507	RC-358
Fleetguard		FS01287	R60P
Fleetguard	R60P-FLTG	FS1287	R60P
Fleetguard	R90P-FLTG	FS19532	R90P
Fleetguard	R90T-FLTG	FS19551	R90T
Fleetguard	R120T-FLTG	FS19591	R120T
Fleetguard		FS19605	PFF5601
Fleetguard	R60T-FLTG	FS19687	R60T
Fleetguard	R25P-FLTG	FS19704	R25P
Fleetguard	R45T-FLTG	FS19734	R45T
Fleetguard	PFF5604-FLTG	FS19735	R260P
Fleetguard	PFF5606-FLTG	FS19736	PFF5605
Fleetguard	PFF5603-FLTG	FS19737	R160T
Fleetguard	PFF5605-FLTG	FS19753	PFF5605
Fleetguard	R120P-FLTG	FS19754	R120P
Fleetguard		FS19769	B160T
Fleetguard	R45P-FLTG	FS19775	R45P
Fleetguard	R25T-FLTG	FS19778	R25T
Fleetguard	R25S-FLTG	FS19779	R25S
Fleetguard	R15P-FLTG	FS19824	R15P
Fleetguard		FS19895	R60T-D-MAX
Fleetguard		FS19896	R160T-D-MAX
Fleetguard	R260P is a smaller can which fits the standard application	FS19897	R260P
Fleetguard	2010SM-FLTG	FS20101	2010SM-OR
Fleetguard	2010TM-FLTG	FS20102	2010TM-OR
Fleetguard	2010PM-FLTG	FS20103	2010PM-OR
Fleetguard	2020SM-FLTG	FS20201	2020SM-OR
Fleetguard	2020TM-FLTG	FS20202	2020TM-OR
Fleetguard	2020PM-FLTG	FS20203	2020PM-OR
Fleetguard	2040SM-FLTG	FS20401	2040SM-OR
Fleetguard	2040TM-FLTG	FS20402	2040TM-OR
Fleetguard	2040PM-FLTG	FS20403	2040PM-OR
FORD		3C46-9176-CA	R160T
FORD		2C46-9176-BA	RC-358
GenPart/SDMO		330510013	S2502
GenPart/SDMO		330510014	R12T
GenPart/SDMO		330510015	R260T
GenPart/SDMO		330510016	R160T
GenPart/SDMO		330510017	S3207T
Hamm		05825010	R160T
Hamm		01292404	R160T
Hamm		2044633	R25T
Hengst		443200000	R11T
Hengst		444200000	R12S
Hengst		445200000	2040PM-OR
Hengst		453200000	2040SM-OR
Hengst		455200000	2010PM-OR
Hengst		456200000	2020PM-OR
Hengst		528200001	R12P
Hengst		528200002	R24P
Hengst		528200002	R24P
Hengst		528200003	R26P

OEM	Internal No.	Customer Part No.	Racor Functional Alternative
Hengst		528200004	R90P
Hengst		528200035	2040TM-OR
Hengst		528200037	R90T
Hengst		528200038	R120P
Hengst		528200039	S3209P
Hengst		528200044	R20P
Hengst		528200045	2010SM-OR
Hengst		528200057	R120T
Hengst		528200060	2020SM-OR
Hengst		528200079	R15P
Hengst		528200091	R160T
Hengst		528200091	R160T
Hengst		528200097	R25P
Hengst		528200100	R52P
Hengst		528200104	R12T
Hengst		528200108	R45T
Hengst		528200113	2010TM-OR
Hengst		528200130	S3211
Hengst		528200138	CCV55222-06
Hengst		528200141	CCV55046
Hengst		528200143	CCV55274-08
Hengst		528200158	R90T-D-MAX
Hengst		821200000	R260P
Hengst		E7040KP10	2040TM-OR
Hengst		E7040KP30	2040PM-OR
Hengst		E7567KP	PFF5607
Hengst		H700WK	R260P
Hengst	R160T-D-HGT	H701WK	R160T
Hengst		H701WK	R160T
Hengst	R25P-D-HGT	H7025WK30	R25P
Hengst	R45P-D-HGT	H7045WK30	R45P
Hengst		H7062WK30	R60T-D-MAX
Hengst		H7063WK30	R60T-D-MAX
Hengst		H7090WK10	R90T
Hengst		H7090WK30	R90P
Hengst	R120-MB10-AQII-HGT	H7118WK10	R120-MB10-AQII
Hengst	R120P-D-HGT	H7120WK30	R120P
Hengst	PFF5605-D-HGT	H7121WK10	PFF5605
Hino		23401-1440	R60T
Hino		23401-1440L	R60T
Hino		23402-1440	R60T
IRMER		4006527	PFF5609
IVECO		42554067	R160P
IVECO		42549295	R90T-D-MAX
IVECO		504166113	R160T
IVECO		504086268	R90T-D-MAX
IVECO		504272431	R90T-D-MAX
JCB		32/925218	R60T
Knecht Mahle		70325003	R52T
Knecht Mahle		70325008	R45T
Knecht Mahle		76878730	R160T
Knecht Mahle		KC 200	R160T
KOHLER		411900028	R90P
Laverda		00322930450L	R160T
Lex Auto		FS15951	R120T

OEM	Internal No.	Customer Part No.	Racor Functional Alternative
Lieherr	R90T has different diameter head to can seal.	10044302	R90T
Lieherr		10044303	R90-DS-RAC-01
Lieherr		10044303	DS Can N/A
Lieherr		10101998	R160T
Lieherr	R90T has different diameter head to can seal.	10326961	R90T
Lieherr		511707814	PFF5601
MACK TRUCKS		20863191	R60T-D-MAX
MACK TRUCKS		20866207	R90P-D-MAX
MAN		51.27421019	DRK00043
MAHLE		70325004	R52T
MAHLE		70325008	R45T
MAHLE		76832430	R160T
MAHLE		76878730	R160T
MAN		81125010030	PFF5601
MAN		51.12 503.0052	B160T
MAN	120T-D-MAN	51.12503.0051	R160T
MAN		51.12503.0053	RC-358
MAN		51.12503-0035	R60P
MAN		51.12503-0066	R90P
MAN	R120T-D-MAN	51.12503-6000	R160T
MAN		51.27421-0193	DRK00043
MAN		81.12503.0065	2010PM-OR
MANN HUMMEL		PL420X	B160T
MANN HUMMEL	R45T-MH	WK 1020	R45T
MANN HUMMEL	R90T-MH	WK 1060/5	R90T
MANN HUMMEL	PFF5603-MH	WK 1080/6	PFF5603
MANN HUMMEL	R160T-MH	WK 1080/7	R160T
MANN HUMMEL		WK 1080/7	R160T
MANN HUMMEL	R60T-MH	WK 1142	R60T
MANN HUMMEL	R60P-MH	WK 1142/1	R60P
MANN HUMMEL	R120T-MH	WK 1175	R120T
MANN HUMMEL	PFF5605-MH	WK 1176	PFF5605
MANN HUMMEL	R20P-MH	WK 923/2	R20P
MANN HUMMEL	S3227-MH	WK 924/1	S3227
MANN HUMMEL	R26T-MH	WK 933	R26T
MANN HUMMEL	R25P-MH	WK 940/32	R25P
MANN HUMMEL	R260P-MH	WK 940/33	R260P
Mercury		35-60494-1	PFF5510
Mercury		35-884380T	31871
Mercury		35-807172	PFF5510
MTU		XP53508300002	2020PM-OR
OTOKAR		13C08-33116-AA	R160T
Penders&Vanherl		2914807000	PFF5609
ROPA		303083	R160T-D-MAX
RVI (Renault Truck)		20541383	R260P
RVI (Renault Truck)		20591256	R60T-D-MAX
RVI (Renault Truck)		20745605	R90P-D-MAX
RVI (Renault Truck)		20851191	R60T-D-MAX
RVI (Renault Truck)		20998346	R60P-D-MAX-KIT
RVI (Renault Truck)		20998349	R90P-D-MAX-KIT
RVI (Renault Truck)		20998634	R260P
RVI (Renault Truck)		7420541383	R260P
RVI (Renault Truck)		7420591256	R60T-D-MAX
RVI (Renault Truck)		7420745605	R90T-D-MAX

OEM	Internal No.	Customer Part No.	Racor Functional Alternative
RVI (Renault Truck)		7420754418	R160T-D-MAX
RVI (Renault Truck)		7420851191	R60T-D-MAX
RVI (Renault Truck)		7420998346	R60P-D-MAX-KIT
RVI (Renault Truck)		7420998349	R90P-D-MAX-KIT
RVI (Renault Truck)		7420998634	R260P
Scania		1393640	R90P
Scania		1518512	PFF5605
Scania		1671502	2020PM-OR
Scania		1675795	2040PM-OR
Scania		1679778	2040TM-OR
Scania		1780730	NA
Separ		01002	PFF5600
Separ		01010	PFF5600
Separ		01030	PFF5601
Separ		20510	2000TM-OR
Separ		20530	2000PM-OR
Separ		20110	2010TM-OR
Separ		20130	2010PM-OR
Separ		20410	2040TM-OR
Separ		20430	2040PM-OR
Separ		20210	2020TM-OR
Separ		20430	2020PM-OR
SUZUKI	S3232SUZ	99999-FILCA-32U	S3232
Tempo		MF10	PFF5510
Tempo		MF11	PFF5510
Volvo		846734	2040SM-OR
Volvo		861014	2010TM-OR
Volvo		889419	2040PM-OR
Volvo		889421	2040SM-OR
Volvo		889422	2020PM-OR
Volvo		889425	2020SM-OR
Volvo		1147147	2010SM-OR
Volvo		3581760	2010PM-OR
Volvo		3588943	R120S-HD
Volvo		3817517	R120S-HD
Volvo		3825027	2040TM-OR
Volvo		3827277	2020TM-OR
Volvo		3827278	2020PM-OR
Volvo		3827507	2040PM-OR
Volvo		3828838	R120S-HD
Volvo		3831224	2020SM-OR
Volvo		3831225	2040SM-OR
Volvo		3838852	2040TM-OR
Volvo		3838854	2020TM-OR
Volvo		3888460	NA
Volvo		3989632	R90T
Volvo		8159975	R90P
Volvo		8159975	R90P
Volvo	R120VCE30	11110189	PFF5605
Volvo	R120VCE10	11110474	PFF5605
Volvo	R120VCE10	11110668	PFF5605
Volvo		11110683	R160P-D-MAX
Volvo		20381204	R45T
Volvo		20386080	R25P
Volvo		20386081	R25T
Volvo		20386082	R25S

OEM	Internal No.	Customer Part No.	Racor Functional Alternative
Volvo		20430751	RC-358
Volvo		20450423	R90T
Volvo		20480593	R260T
Volvo	R260P-D-VOL	20514654	R260P
Volvo		20541383	R260P
Volvo		20591257	R60T-D-MAX
Volvo		20745605	R90T-D-MAX
Volvo		20765505	R160T-D-MAX
Volvo		20782330	R90P-D-MAX
Volvo		20788794	R90P-D-MAX
Volvo		20851191	R60T-D-MAX
Volvo		20853583	R60T-D-MAX
Volvo		20879806	R60P-D-MAX-KIT
Volvo		20879812	R260P
Volvo		20998346	R260P
Volvo		20998367	R260P
Volvo	R100RD-VOL-01	21005832	R90P-D-MAX-KIT
Volvo		21017305	R60P-D-MAX-KIT
Volvo		21017307	R90P-D-MAX-KIT
Volvo		21041613	R90T-D-MAX-KIT
Volvo		30000002	R90P
Volvo		30000002	R90P
Volvo		7420754418	R160T-D-MAX
Volvo		7420851191	R60T-D-MAX
Volvo		7420851191	R60T-D-MAX
Volvo		7420998634	R260P
Volvo		VOE11110189	PFF5605
Volvo		VOE11110474	PFF5605
Volvo		VOE11110668	PFF5605
Volvo		VOE11110683	R160P-D-MAX
Volvo		VOE1147147	2010SM-OR
Volvo		VOE11716046	R20P
Volvo		VOE20450423	R90T
Volvo		VOE30000002	R90P
Volvo		VOE3825027	2040TM-OR
Volvo		VOE8159975	R90T
Volvo		VOE861014	2010TM-OR
YAMAHA		110302227	S3227
YAMAHA		110303232	S3232
YANMAR		2065055020	S3227
YAMAHA		YMF110302227	S3227
YAMAHA		YMF110303232	S3232
YAMAHA		YMF110303240	S3240
YAMAHA		YMM2E0950000	S2502
YAMAHA		YMM2E0950100	S2502
YAMAHA		YMM2E1140000	S3240
YAMAHA		YMM2E2270000	S3227
YAMAHA		YMM2E2270100	S3227
YAMAHA		YMM2E3410000	S3232
YAMAHA		YMM2E3410100	S3232
YAMAHA		YMM2E3410100	S3232
UNKNOWN		11716046	R20P
UNKNOWN		1768	R160T